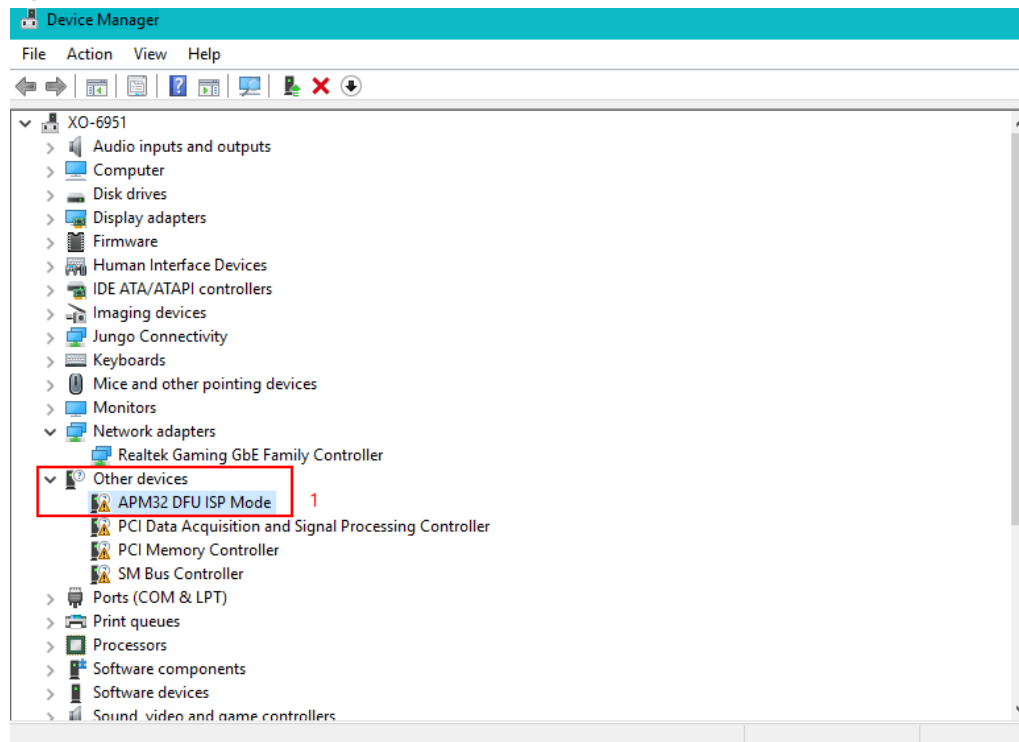
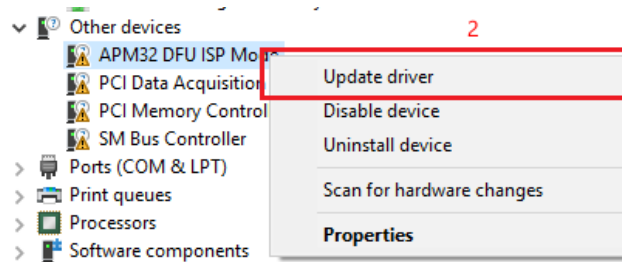


# Dfu Driver Guide

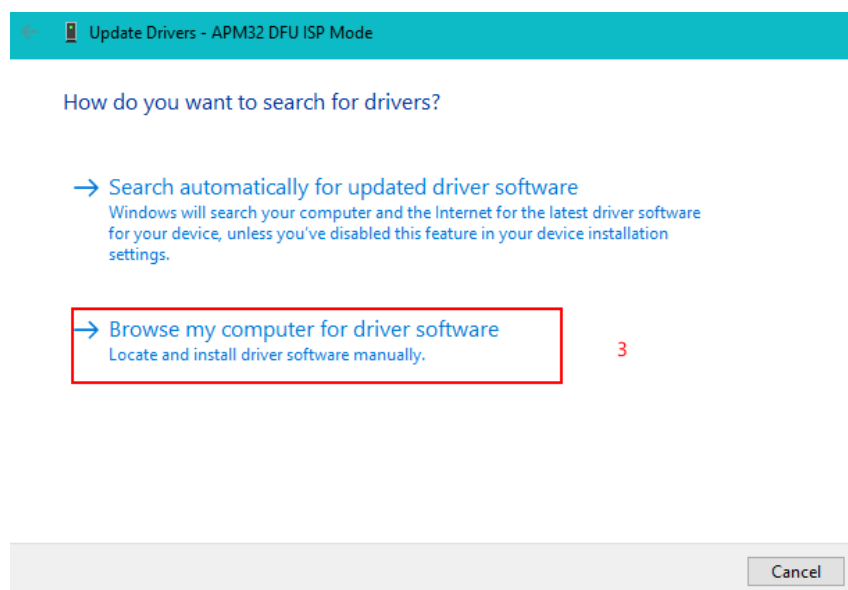
① We could see the 'APM32 DFU ISP Mode' device without driver from the Device Manager.



② Right click the device to update driver:



③ Browse your computer for the driver file.



④ Pick from a list of available drivers on your computer.

Update Drivers - APM32 DFU ISP Mode

Browse for drivers on your computer

Search for drivers in this location:

D:\Driver\x64\APM32DfuDriver

Browse...

☒ Include subfolders

Next Cancel

→ Let me pick from a list of available drivers on my computer  
This list will show available drivers compatible with the device, and all drivers in the same category as the device.

⑤ Show all devices and click Next.

Update Drivers - APM32 DFU ISP Mode

Select your device's type from the list below.

Common hardware types:

Show All Devices

61883 devices

Audio inputs and outputs

Audio Processing Objects (APOs)

Audio/video control devices

Batteries

Biometric devices

Bluetooth

Cameras

Computer

Custom USB Devices

Digital Media Devices

Next Cancel

⑥ Browse from disk to search for the driver file.

Update Drivers - APM32 DFU ISP Mode

Select the device driver you want to install for this hardware.

Select the manufacturer and model of your hardware device and then click Next. If you have a disk that contains the driver you want to install, click Have Disk.

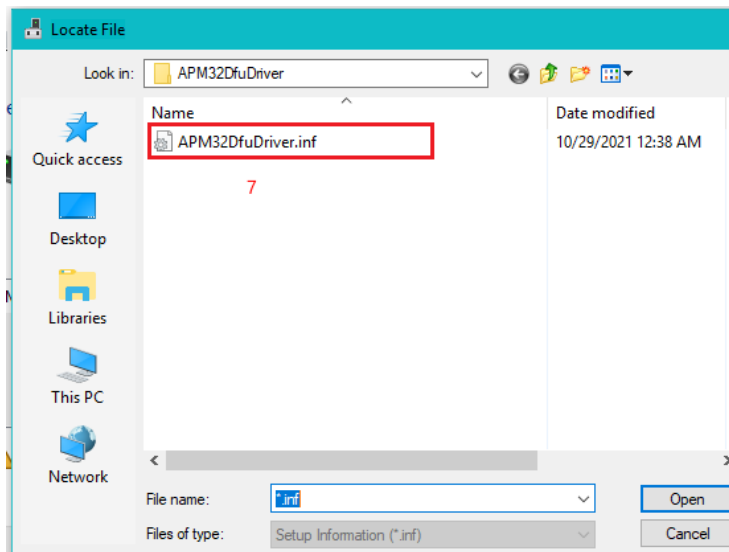
Model

USBCANALYST\_II\_PLUS

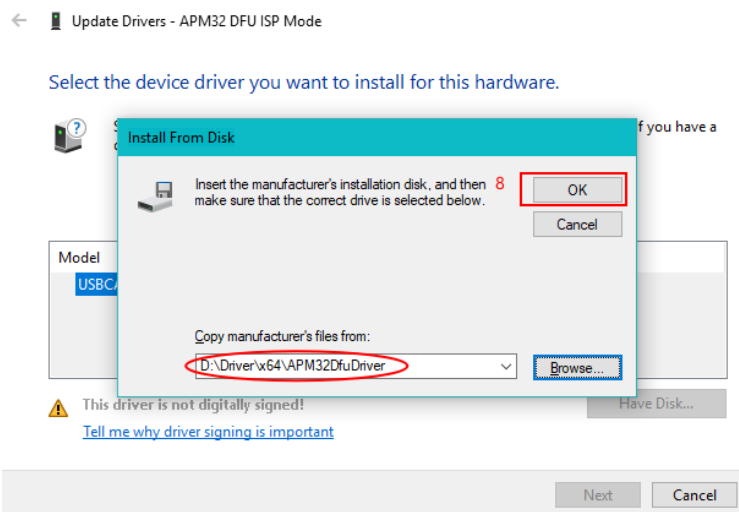
Have Disk...

Next Cancel

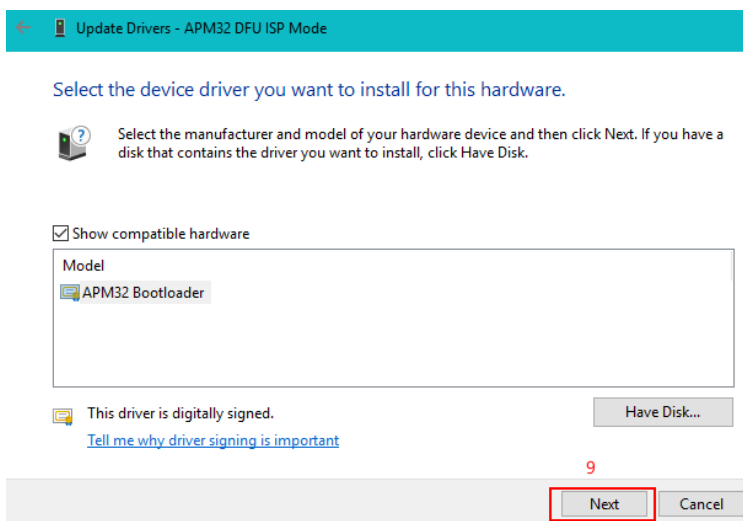
- ⑦ Select the appropriate inf file from 'Win32' File folder for 32-bit operating system, otherwise search from 'x64' File folder for 64-bit operating system.



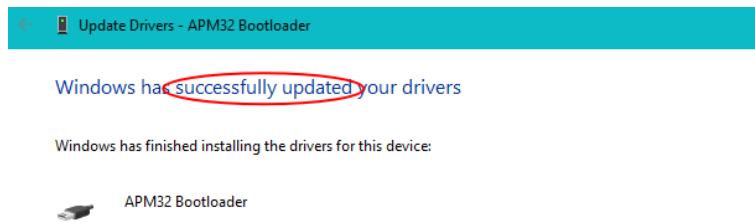
- ⑧ Click OK after selecting the appropriate inf file.



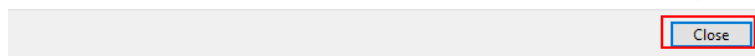
- ⑨ Click Next.



⑩ The drivers are installed successfully.



10



- We could see the APM32 Bootloader device from the Device Manager.

